

Acta Crystallographica Section E

Structure Reports

Online

ISSN 1600-5368

6-Methylnicotinic acid

Mei-Ling Pan,* Yang-Hui Luo and Shu-Lin Mao

Ordered Matter Science Research Center, College of Chemistry and Chemical Engineering, Southeast University, Nanjing 210096, People's Republic of China
Correspondence e-mail: chmsunbw@seu.edu.cn

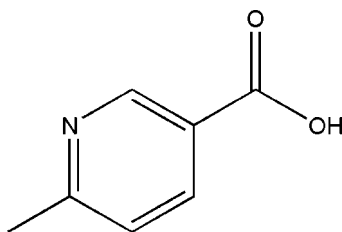
Received 13 July 2011; accepted 6 August 2011

Key indicators: single-crystal X-ray study; $T = 293$ K; mean $\sigma(\text{C}-\text{C}) = 0.005$ Å; R factor = 0.049; wR factor = 0.126; data-to-parameter ratio = 8.3.

All non-H atoms of the title compound, $\text{C}_7\text{H}_7\text{NO}_2$, are nearly coplanar, the r.m.s. deviation being 0.0087 Å. In the crystal, the partially overlapped arrangement and the face-to-face distance of 3.466 (17) Å between parallel pyridine rings of neighboring molecules indicates the existence of π - π stacking. Intermolecular O—H...N hydrogen bonding and weak C—H...O hydrogen bonding are present in the crystal structure.

Related literature

The title compound is an intermediate of the drug etoricoxib (systematic name: 5-chloro-6'-methyl-3-[4-(methylsulfonyl)phenyl]-2,3'-bipyridine). For the structure of etoricoxibium picrate, see: Jasinski *et al.* (2011).



Experimental

Crystal data

 $\text{C}_7\text{H}_7\text{NO}_2$ $M_r = 137.14$

Monoclinic, $P2_1$
 $a = 3.8788$ (8) Å
 $b = 13.634$ (3) Å
 $c = 6.1094$ (12) Å
 $\beta = 90.51$ (3)°
 $V = 323.07$ (12) Å³

$Z = 2$
Mo $K\alpha$ radiation
 $\mu = 0.11$ mm⁻¹
 $T = 293$ K
0.20 × 0.20 × 0.20 mm

Data collection

Rigaku SCXmini diffractometer
3358 measured reflections
763 independent reflections

634 reflections with $I > 2\sigma(I)$
 $R_{\text{int}} = 0.059$

Refinement

$R[F^2 > 2\sigma(F^2)] = 0.049$
 $wR(F^2) = 0.126$
 $S = 1.05$
763 reflections
92 parameters

1 restraint
H-atom parameters constrained
 $\Delta\rho_{\text{max}} = 0.25$ e Å⁻³
 $\Delta\rho_{\text{min}} = -0.16$ e Å⁻³

Table 1

Hydrogen-bond geometry (Å, °).

$D-H\cdots A$	$D-H$	$H\cdots A$	$D\cdots A$	$D-H\cdots A$
O1—H1...N1 ⁱ	0.82	1.87	2.664 (4)	163
C4—H4A...O2 ⁱⁱ	0.93	2.54	3.350 (4)	146

Symmetry codes: (i) $-x, y - \frac{1}{2}, -z + 2$; (ii) $x + 1, y, z - 1$.

Data collection: *CrystalClear* (Rigaku, 2005); cell refinement: *CrystalClear*; data reduction: *CrystalClear*; program(s) used to solve structure: *SHELXS97* (Sheldrick, 2008); program(s) used to refine structure: *SHELXL97* (Sheldrick, 2008); molecular graphics: *DIAMOND* (Brandenburg & Putz, 2005); software used to prepare material for publication: *SHELXL97*.

This work was supported by the National Natural Science Foundation of China (Pproject 20671019)

Supplementary data and figures for this paper are available from the IUCr electronic archives (Reference: XU5270).

References

- Brandenburg, K. & Putz, H. (2005). *DIAMOND*. Crystal Impact GbR, Bonn, Germany.
Jasinski, J. P., Butcher, R. J., Siddegowda, M. S., Yathirajan, H. S. & Ramesha, A. R. (2011). *Acta Cryst.* **E67**, o107–o108.
Rigaku (2005). *CrystalClear*. Rigaku Corporation, Tokyo, Japan
Sheldrick, G. M. (2008). *Acta Cryst.* **A64**, 112–122.

supplementary materials

Acta Cryst. (2011). E67, o2345 [doi:10.1107/S1600536811031837]

6-Methylnicotinic acid

M.-L. Pan, Y.-H. Luo and S.-L. Mao

Comment

The title compound is the drug intermediate of etoricoxib (a non-steroidal anti-inflammatory drug for the treatment of arthritis and osteoarthritis) (Jasinski *et al.*, 2011). As part of our interest in the intermediate, we report here the crystal structure of the title compound.

The molecular structure of the title compound is shown in Fig. 1. All the non-H atoms are almost located in one plane as the atoms O1 and O2 are shifted 0.0377 and 0.0236 Å out of the pyridine ring plane, respectively.

The crystal structure is stabilized by intermolecular O—H...N and C—H...O hydrogen bonds (Table 1). π ... π stacking is present between pyridine rings of the neighboring molecules.

Experimental

6-Methyl-nicotinic acid was purchased commercially. Crystals suitable for X-ray diffraction were obtained by slow evaporation of a methanol solution.

Refinement

All H atoms were fixed geometrically and treated as riding with C—H (CH₃) = 0.96 Å or C—H (CH) = 0.93 Å and O—H = 0.82 Å with $U_{\text{iso}}(\text{H}) = 1.5 U_{\text{eq}}(\text{C}, \text{O})$ for methyl and carboxyl H atoms and $U_{\text{iso}}(\text{H}) = 1.2 U_{\text{eq}}(\text{C})$ for the others. Friedel pairs were merged as no significant anomalous scatterings.

Figures

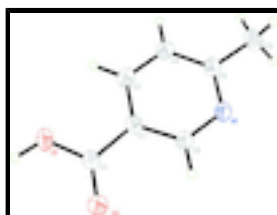


Fig. 1. The molecular structure of the title compound with atom-numbering scheme. Displacement ellipsoids are drawn at the 30% probability level. H atoms are represented as small spheres of arbitrary radii.

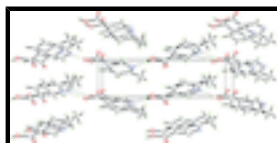


Fig. 2. Packing diagram.

6-Methylnicotinic acid

Crystal data

$C_7H_7NO_2$	$F(000) = 144$
$M_r = 137.14$	$D_x = 1.410 \text{ Mg m}^{-3}$
Monoclinic, $P2_1$	Mo $K\alpha$ radiation, $\lambda = 0.71073 \text{ \AA}$
Hall symbol: P 2yb	Cell parameters from 764 reflections
$a = 3.8788 (8) \text{ \AA}$	$\theta = 3.3\text{--}27.5^\circ$
$b = 13.634 (3) \text{ \AA}$	$\mu = 0.11 \text{ mm}^{-1}$
$c = 6.1094 (12) \text{ \AA}$	$T = 293 \text{ K}$
$\beta = 90.51 (3)^\circ$	Prism, colorless
$V = 323.07 (12) \text{ \AA}^3$	$0.20 \times 0.20 \times 0.20 \text{ mm}$
$Z = 2$	

Data collection

Rigaku SCXmini diffractometer	634 reflections with $I > 2\sigma(I)$
Radiation source: fine-focus sealed tube graphite	$R_{\text{int}} = 0.059$
Detector resolution: $13.6612 \text{ pixels mm}^{-1}$	$\theta_{\text{max}} = 27.5^\circ$, $\theta_{\text{min}} = 3.3^\circ$
CCD_Profile_fitting scans	$h = -5 \rightarrow 4$
3358 measured reflections	$k = -17 \rightarrow 17$
763 independent reflections	$l = -7 \rightarrow 7$

Refinement

Refinement on F^2	Primary atom site location: structure-invariant direct methods
Least-squares matrix: full	Secondary atom site location: difference Fourier map
$R[F^2 > 2\sigma(F^2)] = 0.049$	Hydrogen site location: inferred from neighbouring sites
$wR(F^2) = 0.126$	H-atom parameters constrained
$S = 1.05$	$w = 1/[\sigma^2(F_o^2) + (0.0712P)^2 + 0.0005P]$
763 reflections	where $P = (F_o^2 + 2F_c^2)/3$
92 parameters	$(\Delta/\sigma)_{\text{max}} < 0.001$
1 restraint	$\Delta\rho_{\text{max}} = 0.25 \text{ e \AA}^{-3}$
	$\Delta\rho_{\text{min}} = -0.16 \text{ e \AA}^{-3}$

Special details

Geometry. All esds (except the esd in the dihedral angle between two l.s. planes) are estimated using the full covariance matrix. The cell esds are taken into account individually in the estimation of esds in distances, angles and torsion angles; correlations between esds in cell parameters are only used when they are defined by crystal symmetry. An approximate (isotropic) treatment of cell esds is used for estimating esds involving l.s. planes.

Refinement. Refinement of F^2 against ALL reflections. The weighted R -factor wR and goodness of fit S are based on F^2 , conventional R -factors R are based on F , with F set to zero for negative F^2 . The threshold expression of $F^2 > \sigma(F^2)$ is used only for calculating R -factors(gt) *etc.* and is not relevant to the choice of reflections for refinement. R -factors based on F^2 are statistically about twice as large as those based on F , and R -factors based on ALL data will be even larger.

Fractional atomic coordinates and isotropic or equivalent isotropic displacement parameters (\AA^2)

	x	y	z	$U_{\text{iso}}^*/U_{\text{eq}}$
O1	0.0195 (8)	0.40438 (18)	0.9514 (4)	0.0631 (8)
H1	-0.0573	0.3629	1.0349	0.095*
O2	-0.1535 (7)	0.50696 (18)	1.2089 (4)	0.0675 (8)
C1	-0.0216 (7)	0.4918 (2)	1.0367 (5)	0.0440 (7)
C2	0.4505 (10)	0.8121 (3)	0.5202 (7)	0.0574 (9)
H2A	0.5640	0.8578	0.6162	0.086*
H2B	0.2546	0.8431	0.4526	0.086*
H2C	0.6080	0.7911	0.4092	0.086*
C3	0.2600 (8)	0.5539 (3)	0.6920 (6)	0.0465 (8)
H3A	0.2823	0.4902	0.6394	0.056*
C4	0.3724 (8)	0.6311 (3)	0.5713 (5)	0.0482 (8)
H4A	0.4753	0.6202	0.4366	0.058*
C5	0.3345 (9)	0.7257 (3)	0.6479 (5)	0.0423 (7)
C6	0.0802 (8)	0.6670 (2)	0.9593 (5)	0.0439 (8)
H6A	-0.0207	0.6796	1.0940	0.053*
N1	0.1857 (8)	0.74310 (17)	0.8408 (4)	0.0453 (7)
C7	0.1119 (9)	0.5709 (2)	0.8942 (5)	0.0395 (7)

Atomic displacement parameters (\AA^2)

	U^{11}	U^{22}	U^{33}	U^{12}	U^{13}	U^{23}
O1	0.1000 (19)	0.0295 (13)	0.0602 (16)	-0.0059 (12)	0.0191 (14)	0.0014 (11)
O2	0.107 (2)	0.0408 (16)	0.0551 (13)	-0.0023 (14)	0.0297 (14)	-0.0016 (11)
C1	0.0556 (18)	0.0312 (16)	0.0452 (16)	-0.0007 (15)	0.0018 (14)	0.0039 (14)
C2	0.063 (2)	0.048 (2)	0.0615 (19)	-0.0032 (17)	0.0127 (17)	0.0114 (17)
C3	0.054 (2)	0.0369 (18)	0.0483 (15)	0.0028 (14)	0.0021 (14)	-0.0069 (14)
C4	0.0549 (17)	0.047 (2)	0.0432 (16)	0.0036 (15)	0.0089 (13)	-0.0069 (15)
C5	0.0446 (16)	0.0364 (17)	0.0460 (16)	0.0002 (14)	0.0013 (13)	0.0022 (14)
C6	0.0542 (19)	0.0347 (18)	0.0431 (16)	0.0006 (14)	0.0076 (15)	0.0002 (13)
N1	0.0578 (16)	0.0310 (16)	0.0472 (14)	0.0019 (12)	0.0085 (13)	-0.0009 (10)
C7	0.0437 (16)	0.0338 (17)	0.0409 (15)	0.0005 (11)	-0.0005 (13)	0.0026 (11)

Geometric parameters (\AA , $^\circ$)

O1—C1	1.311 (4)	C3—C7	1.387 (4)
O1—H1	0.8200	C3—H3A	0.9300
O2—C1	1.192 (3)	C4—C5	1.380 (5)
C1—C7	1.482 (4)	C4—H4A	0.9300
C2—C5	1.485 (5)	C5—N1	1.337 (4)
C2—H2A	0.9600	C6—N1	1.332 (4)

supplementary materials

C2—H2B	0.9600	C6—C7	1.375 (5)
C2—H2C	0.9600	C6—H6A	0.9300
C3—C4	1.359 (5)		
C1—O1—H1	109.5	C3—C4—C5	120.3 (3)
O2—C1—O1	124.3 (3)	C3—C4—H4A	119.9
O2—C1—C7	123.2 (3)	C5—C4—H4A	119.9
O1—C1—C7	112.6 (2)	N1—C5—C4	120.8 (3)
C5—C2—H2A	109.5	N1—C5—C2	117.2 (3)
C5—C2—H2B	109.5	C4—C5—C2	121.9 (3)
H2A—C2—H2B	109.5	N1—C6—C7	123.8 (3)
C5—C2—H2C	109.5	N1—C6—H6A	118.1
H2A—C2—H2C	109.5	C7—C6—H6A	118.1
H2B—C2—H2C	109.5	C6—N1—C5	118.6 (3)
C4—C3—C7	119.4 (3)	C6—C7—C3	117.1 (3)
C4—C3—H3A	120.3	C6—C7—C1	119.4 (3)
C7—C3—H3A	120.3	C3—C7—C1	123.5 (3)
C7—C3—C4—C5	-1.0 (4)	N1—C6—C7—C1	-178.6 (3)
C3—C4—C5—N1	-0.3 (5)	C4—C3—C7—C6	1.4 (4)
C3—C4—C5—C2	-179.4 (4)	C4—C3—C7—C1	179.3 (3)
C7—C6—N1—C5	-0.7 (5)	O2—C1—C7—C6	-1.0 (5)
C4—C5—N1—C6	1.2 (5)	O1—C1—C7—C6	178.6 (3)
C2—C5—N1—C6	-179.7 (4)	O2—C1—C7—C3	-178.8 (3)
N1—C6—C7—C3	-0.6 (5)	O1—C1—C7—C3	0.7 (4)

Hydrogen-bond geometry (Å, °)

<i>D</i> —H... <i>A</i>	<i>D</i> —H	H... <i>A</i>	<i>D</i> ... <i>A</i>	<i>D</i> —H... <i>A</i>
O1—H1...N1 ⁱ	0.82	1.87	2.664 (4)	163
C4—H4A...O2 ⁱⁱ	0.93	2.54	3.350 (4)	146

Symmetry codes: (i) $-x, y-1/2, -z+2$; (ii) $x+1, y, z-1$.

Fig. 1

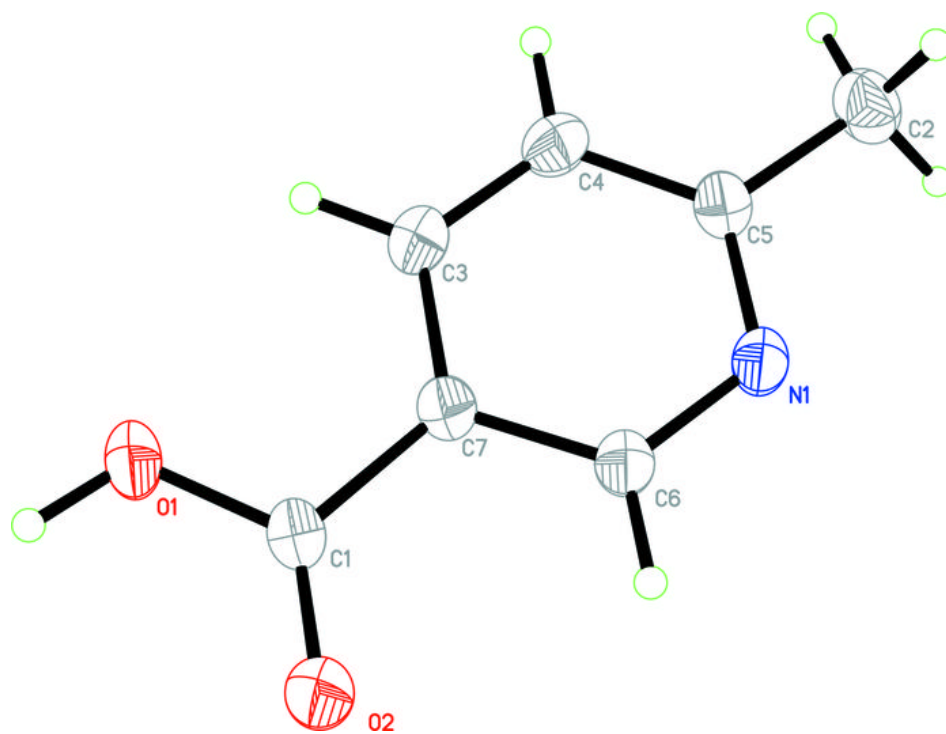


Fig. 2

